



REGIONAL SPECIALISED METEOROLOGICAL CENTRE-TROPICAL CYCLONES, NEW DELHI
TROPICAL CYCLONE ADVISORY BULLETIN NO. 19

FROM: RSMC –TROPICAL CYCLONES, NEW DELHI

TO: STORM WARNING CENTRE, NAYPYI TAW (MYANMAR)
STORM WARNING CENTRE, BANGKOK (THAILAND)
STORM WARNING CENTRE, COLOMBO (SRILANKA)
STORM WARNING CENTRE, DHAKA (BANGLADESH)
STORM WARNING CENTRE, KARACHI (PAKISTAN)
METEOROLOGICAL OFFICE, MALE (MALDIVES)
OMAN METEOROLOGICAL DEPARTMENT, MUSCAT (THROUGH RTH JEDDAH)
YEMEN METEOROLOGICAL SERVICES, REPUBLIC OF YEMEN (THROUGH RTH JEDDAH)
NATIONAL CENTRE FOR METEOROLOGY, UAE (THROUGH RTH JEDDAH)
PRESIDENCY OF METEOROLOGY AND ENVIRONMENT, SAUDI ARABIA (THROUGH RTH JEDDAH)
IRAN METEOROLOGICAL ORGANISATION, (THROUGH RTH JEDDAH)
QATAR METEOROLOGICAL DEPARTMENT (THROUGH RTH JEDDAH)

TROPICAL CYCLONE ADVISORY NO. 19 FOR NORTH INDIAN OCEAN (THE BAY OF BENGAL AND ARABIAN SEA) VALID FOR NEXT 120 HOURS ISSUED AT 0920 UTC OF 26.05.2021 BASED ON 0600 UTC OF 26.05.2021.

SUB: THE VERY SEVERE CYCLONIC STORM ‘YAAS’ (PRONOUNCED AS ‘YASS’) OVER NORTHWEST BAY OF BENGAL– [\(CYCLONE WARNING FOR ODISHA – WEST BENGAL COASTS\)](#)

THE VERY SEVERE CYCLONIC STORM ‘YAAS’ (PRONOUNCED AS ‘YASS’) OVER NORTHWEST BAY OF BENGAL MOVED NORTH-NORTHWESTWARDS WITH A SPEED OF ABOUT 24 KMPH DURING PAST 6 HOURS, CROSSED NORTH ODISHA COAST AROUND LATITUDE 21.35°N AND LONGITUDE 86.95°E, ABOUT 20 KM TO THE SOUTH OF BALASORE AS A VERY SEVERE CYCLONIC STORM WITH A MAXIMUM SUSTAINED WIND SPEED OF 130 -140 KMPH GUSTING TO 155 KMPH BETWEEN 0500 & 0600 HRS UTC OF TODAY, THE 26TH MAY 2021. IT LAY CENTRED AT 0600 UTC OF TODAY, THE 26TH MAY, 2021 OVER NORTH COASTAL ODISHA, NEAR LATITUDE 21.4°N AND LONGITUDE 86.9°E, ABOUT 15 KM SOUTH-SOUTHWEST OF BALASORE (42895).

THE SYSTEM IS VERY LIKELY TO MOVE NORTHWESTWARDS ACROSS INTERIOR DISTRICTS OF ODISHA AND WEAKEN GRADUALLY INTO A SEVERE CYCLONIC STORM DURING NEXT 3 HOURS AND INTO A CYCLONIC STORM DURING THE SUBSEQUENT 6 HOURS.

THE CYCLONE IS BEING TRACKED BY THE SURFACE METEOROLOGICAL OBSERVATORIES OVER ODISHA & WEST BENGAL COASTS AS WELL AS BY DOPPLER WEATHER RADAR AT PARADIP(42976).

PROBABILITY OF CYCLOGENESIS (FORMATION OF DEPRESSION)

NIL: 0%, LOW: 1-25%, FAIR: 26-50%, MODERATE: 51-75% AND HIGH: 76-100%

FORECAST TRACK AND INTENSITY ARE GIVEN IN THE FOLLOWING TABLE:

DATE/TIME(UTC)	POSITION LAT. °N/ LONG. °	MAXIMUM SUSTAINED SURFACE WIND SPEED (KMPH)	CATEGORY OF CYCLONIC DISTURBANCE
26.05.21/0600	21.4/86.9	20-130 GUSTING TO 144	VERY SEVERE CYCLONIC STORM
26.05.21/1200	21.8/86.6	90-100 GUSTING TO 110	SEVERE CYCLONIC STORM
26.05.21/1800	22.3 /86.2	60-70 GUSTING TO 80	CYCLONIC STORM
27.05.21/0000	22.9/85.6	45-55 GUSTING TO 65	DEPRESSION

THE MAXIMUM SUSTAINED WIND SPEED IS 60 KNOTS GUSTING TO 70 KNOTS AROUND SYSTEM CENTRE. SEA CONDITION IS VERY HIGH TO PHENOMENAL. THE ESTIMATED CENTRAL PRESSURE IS 972 HPA. MAXIMUM WINDS ARE OBSERVED IN THE NORTHEAST & SOUTHEAST SECTOR WITH LARGE AREAL EXTENSION.

AS PER SATELLITE IMAGERY BASED ON 0600 UTC OF THE 26TH MAY, THE SYSTEM HAS MOVED IN THE NORH-NORTH WEST DIRECTION IN LAST 03 HOURS AND CROSSED NORTH ORISSA COAST. INTENSE CONVECTIVE CLOUD MASS LIES IN NORTH WEST SECTOR OF THE SYSTEM CENTRE INSIDE THE MAINLAND OVER THE COASTS.

(RK JENAMANI)
SCIENTIST-F RSMC NEWDELHI

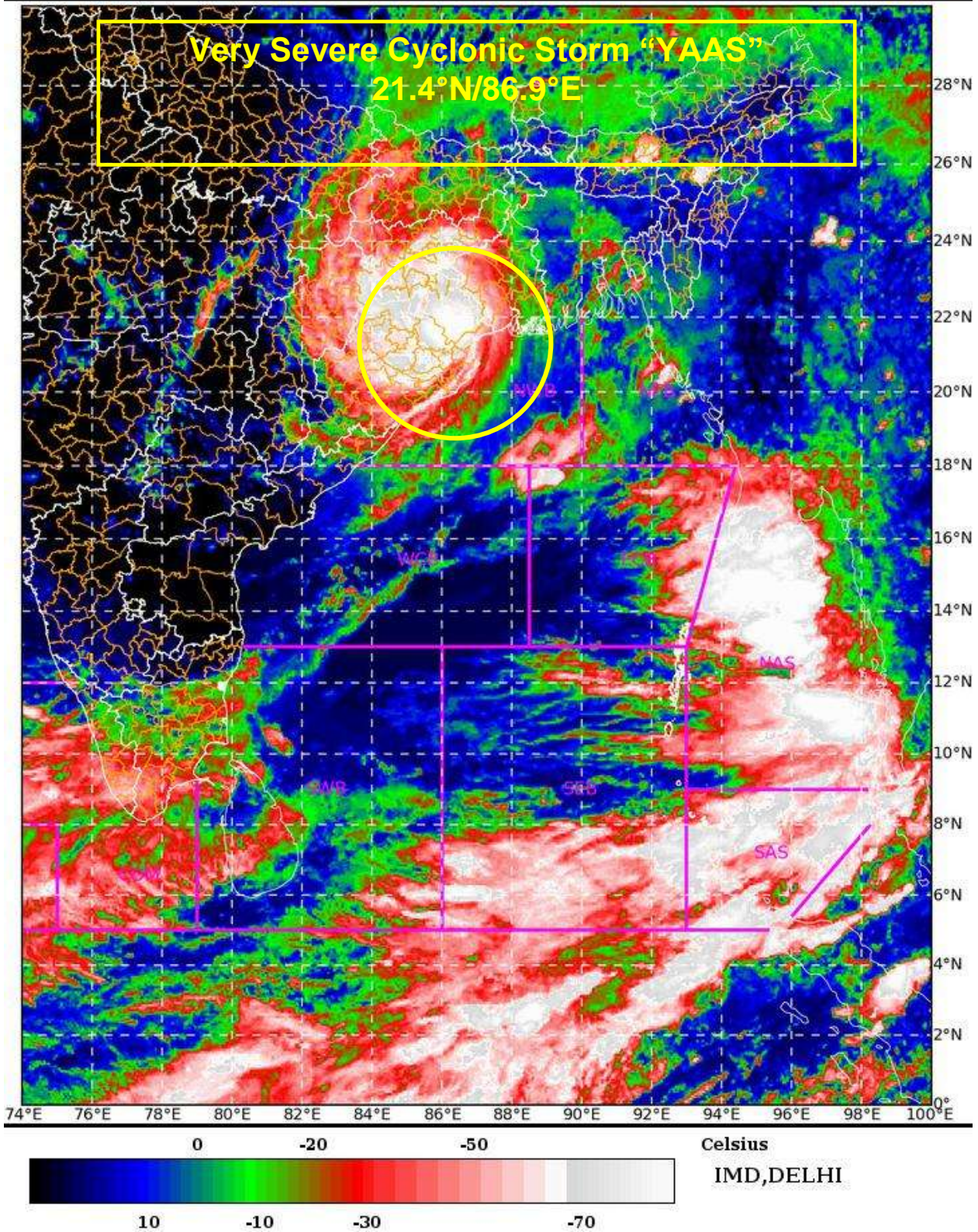
PROBABILITY OF CYCLOGENESIS (FORMATION OF DEPRESSION)

NIL: 0%, LOW: 1-25%, FAIR: 26-50%, MODERATE: 51-75% AND HIGH: 76-100%

SAT : INSAT-3D IMG 26-05-2021/(0800 to 0827) GMT

IMG_TIR1_TEMP 10.8 um 26-05-2021/(1330 to 1357) IST

L1C Mercator

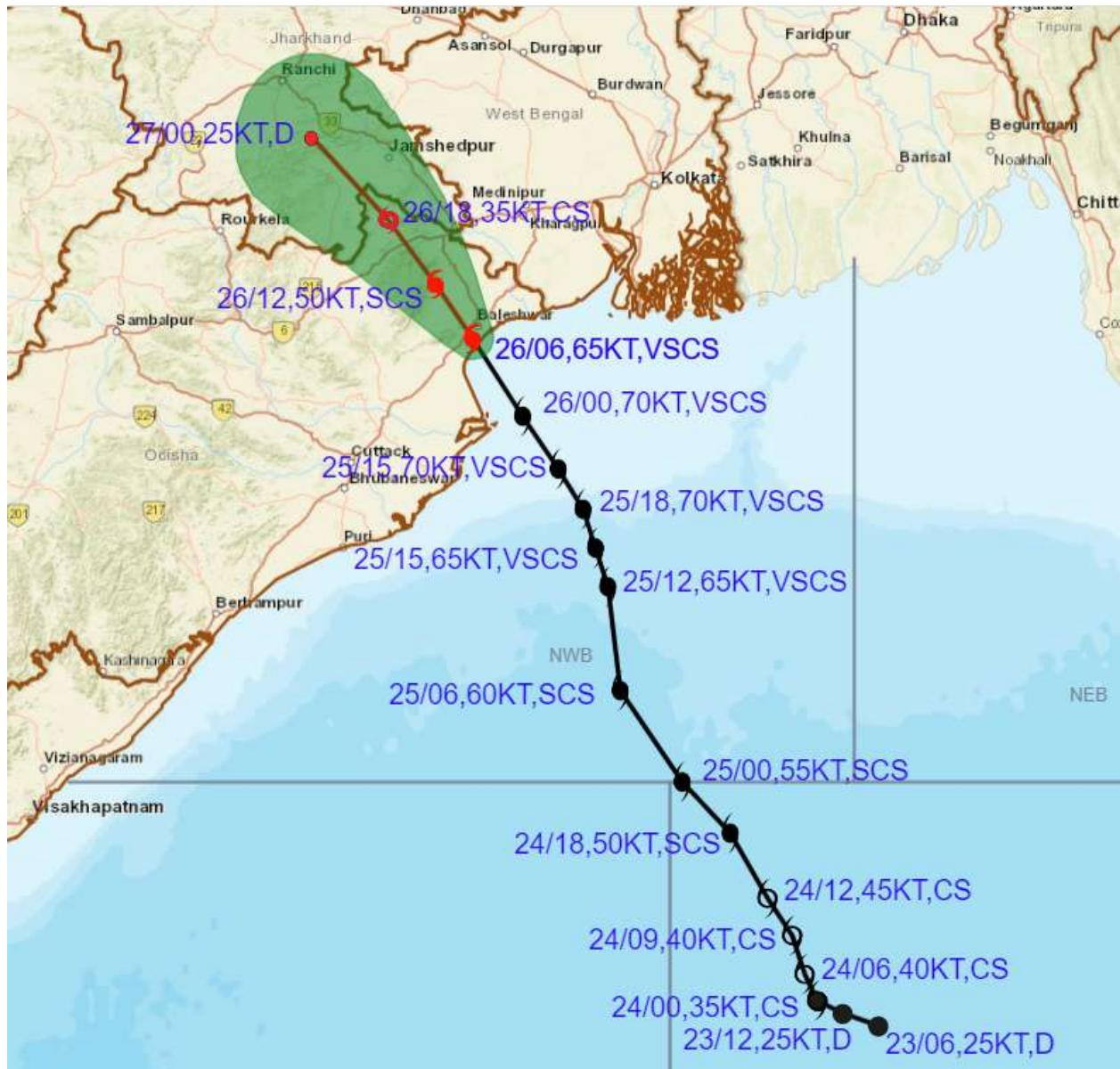


PROBABILITY OF CYCLOGENESIS (FORMATION OF DEPRESSION)

NIL: 0%, LOW: 1-25%, FAIR: 26-50%, MODERATE: 51-75% AND HIGH: 76-100%



OBSERVED AND FORECAST TRACK ALONGWITH CONE OF UNCERTAINTY OF VERY SEVERE CYCLONIC STORM “YAAS” OVER NORTH COASTAL ODISHA BASED ON 0600 UTC OF 26th MAY, 2021



DATE/TIME IN UTC
 IST=UTC + 0530
 L: LOW PRESSURE AREA
 WML: WELL MARKED LOW PRESSURE AREA
 D: DEPRESSION (17-27 KT)
 DD: DEEP DEPRESSION (28-33 KT)
 CS: CYCLONIC STORM (34-47 KT)
 SCS: SEVERE CYCLONIC STORM (48-63KT)
 VSCS: VERY SEVERE CYCLONIC STORM (64-89 KT)
 ESCS: EXTREMELY SEVERE CYCLONIC STORM (90-119 KT)
 SuCS: SUPER CYCLONIC STORM (\geq 120 KT)

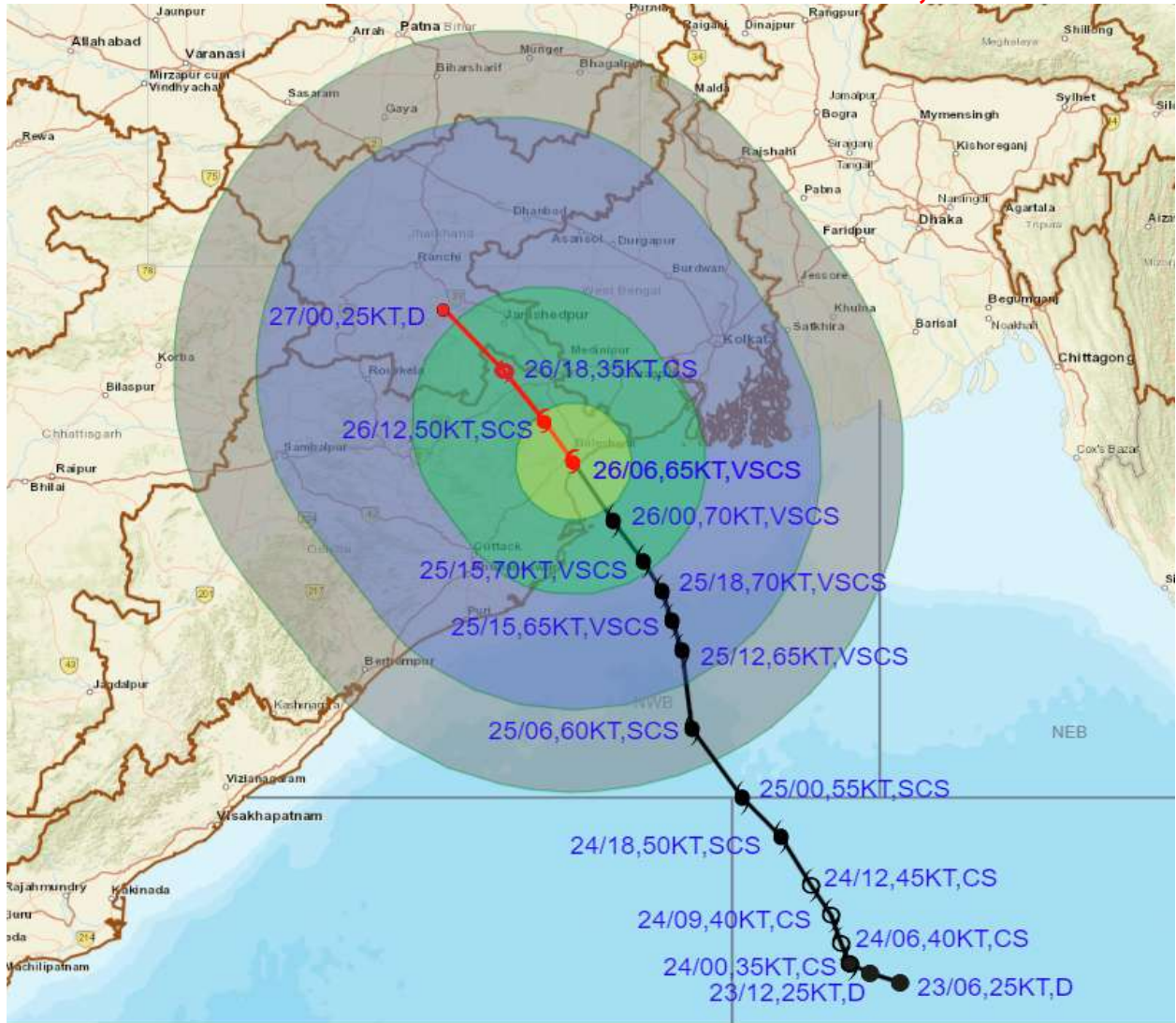
- LESS THAN 34 KT
- 34-47 KT
- \geq 48 KT
- OBSERVED TRACK
- FORECAST TRACK
- CONE OF UNCERTAINTY

PROBABILITY OF CYCLOGENESIS (FORMATION OF DEPRESSION)

NIL: 0%, LOW: 1-25%, FAIR: 26-50%, MODERATE: 51-75% AND HIGH: 76-100%



OBSERVED AND FORECAST TRACK ALONGWITH QUADRANT WIND DISTRIBUTION OF VERY SEVERE CYCLONIC STORM "YAAS" OVER NORTH COASTAL ODISHA BASED ON 0600 UTC OF 26th MAY, 2021



DATE/TIME IN UTC
IST=UTC + 0530
L: LOW PRESSURE AREA
WML: WELL MARKED LOW PRESSURE AREA
D: DEPRESSION (17-27 KT)
DD: DEEP DEPRESSION (28-33 KT)
CS: CYCLONIC STORM (34-47 KT)
SCS: SEVERE CYCLONIC STORM (48-63KT)
VSCS: VERY SEVERE CYCLONIC STORM (64-89 KT)
ESCS: EXTREMELY SEVERE CYCLONIC STORM (90-119 KT)
SuCS: SUPER CYCLONIC STORM (≥ 120 KT)

● LESS THAN 34 KT
 ○ 34-47 KT
 ⊙ ≥ 48 KT
 — OBSERVED TRACK
 — FORECAST TRACK
 ○ CONE OF UNCERTAINTY
AREA OF MAXIMUM SUSTAINED WIND SPEED:
 ■ 28-33 KT (52-61 KMPH)
 ■ 34-49 KT (62-91 KMPH)
 ■ 50-63 KT (92-117 KMPH)
 ■ ≥ 64 (≥118 KMPH)

IMPACT OVER THE SEA

MSW (knot/kmph)	Impact	Action
28-33 (52-61)	Very rough seas	Total suspension of fishing operations
34-49 (62-91)	High to very high seas	Total suspension of fishing operations
50-63 (92-117)	Very high seas	Total suspension of fishing operations
≥ 64 (≥118)	Phenomenal	Total suspension of fishing operations